

WICOMICO COUNTY HEALTH DEPARTMENT
COORDINATION OF COMMUNITY SERVICES

MAILING ADDRESS:
108 E. MAIN STREET
SALISBURY, MD 21801

PHYSICAL ADDRESS:
300 W. CARROLL ST
SALISBURY, MD 21801
PHONE: 410-543-6790
FAX: 410-341-7950

HOLLY CENTER OFFICE: 410-572-6274
FAX: 410-572-6258

WWW.WICOMICOHEALTH.ORG



Public Health
Prevent. Promote. Protect.
Wicomico County
Health Department

UPDATED: 11.18.15

WICOMICO COUNTY HEALTH DEPARTMENT
COORDINATION OF COMMUNITY SERVICES

108 E. MAIN STREET
SALISBURY, MD 21801
410-543-6790

WWW.WICOMICOHEALTH.ORG

COMMUNITY GUIDE
BRINGING THE RESOURCES TO YOU!!



IMPORTANT PHONE NUMBERS

Public Health Info Line: 410-543-6996

Doctor: _____

School: _____

Medical Equipment Supplier: _____

Service Provider: _____

Hospital: _____

Poison Control: _____

Neighbor: _____

Police/Fire/Emergency: _____

NOTES

This directory is meant for informational purposes only. It is not a comprehensive or a complete listing. This listing does not constitute an endorsement or recommendation of services. For more information on any of the programs listed in this guide, please contact our office at 410-543-6790.



Transportation

Children's Road to Recovery	410-750-1300
Health Promotion Safe Kids	410-334-3480
KISS Maryland (kids in safety seats)	410-767-6016 / 800-370-7328
Medical Assistance Transportation - Wicomico County Health Dept.	410-548-5142
Shore Transit	443-260-2300

Websites

Baltimore Association of the Deaf-Blind	www.odhh.md.org
Department of Social Services	www.marylandsail.org
Developmental Disabilities Administration	www.ddamaryland.org
Disabilities Resource Directory	www.regionalresourcecenter.org
Family Networks	www.family-networks.org
Joseph House	www.josephhouse.org
Muscular Dystrophy Support	www.mdausa.org
National Library of Medicine	www.nlm.nih.gov
Parent Support, Our Kids	www.our-kids.org
The Family Village	www.familyvillage.wisc.edu
The Parents Place of Maryland	www.ppmmd.org
Wicomico County Health Department	www.wicomicohealth.org
Wicomico Mentoring Project	www.wcboe.org

Speech, Occupation and Physical Therapy

Easter Seals	410-546-2894
Infant and Toddler/Child Find Program	410-677-5250

Summer Programs

Camp Odyssey	410-742-4464 x.320
Camp Pinehurst Therapeutic	410-548-4900 x.109
Dove Pointe	410-341-4472
Fairlee	410-778-0566/1-800-677-3800
Parks and Recreation	410-548-4900
Wor-Wic Jordan Center	410-334-2962/410-334-2963

Testing and Evaluation

Kennedy Krieger Institute (Ctr for Autism and Related Disorders)	880-554-2080
Wicomico County Board of Education	410-677-4564

TABLE OF CONTENTS

Associations	4
Behavioral Supports	4
Child Care	4
Education	5
Equipment/Assistive Devices	6
Family Support	7
Financial Assistance	8
Housing	9
Insurance	9
Legal Issues	9
Medical/Nursing	10
Mental Health	11
Nutrition	12
Respite	12
Self-Advocacy	12
Socialization/Leisure/Mentoring	13
Speech, Occ, and Physical Therapy	14
Summer Programs	14
Testing and Evaluation	14
Transportation	15
Website Resources	15



Associations

Americans Disabilities Act ADA Info. Line	1-800-514-0301
Brain Injury Association	1-800-444-6443
Deaf & Hard of Hearing	410-742-5052
Baltimore Association of the Deaf-Blind	V/TTY 410-247-5054
Abilities Network and Foundation	1-800-492-2523
Learning Disabilities Association	1-888-265-6459
Multiple Sclerosis Society	1-800-532-7667
March of Dimes	410-752-7990
Muscular Dystrophy Association	1-888-484-7072
National Aphasia Association	1-800-922-4622
Tourette Syndrome Association	410-867-1151
Spina Bifida Association of Maryland	1-800-621-3141



Behavioral Supports

Dove Pointe	410-341-4472
Somerset Community Services	410-623-2261
Warm Line	410-677-6590



Child Care

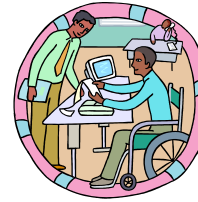
Dove Pointe	410-341-4472
Licensing Child Care	410-767-7805
Lower Shore Child Care Resource Ctr.	410-543-6650
Purchase of Care DSS	410-713-3900
Safe Sitter Classes (Sponsored by PRMC)	410-543-7126

Socialization/Leisure/Mentoring

4-Steps Therapeutic riding	410-835-8814
Assateague Island National Seashore	410-641-1441
Baltimore City Community College Radio Reading Network of Maryland	1-800-455-5605
Believe in Tomorrow	1-800-933-5470
Best Buddies	410-327-9812
Big Brothers/Big Sisters	410-543-2447
Camp Pecometh	410-556-6900
Challenger Little League	410-546-4935
Easter Seals Friends of Fairlee	800-677-3800
Girl Scouts	410-742-5107
Fairlee Manor Recreation & Education Center	410-778-0566
Melwood's Recreation & Travel	301-870-3226
Salisbury Salvation Army	410-546-7766
Special Olympics	410-726-7117
Wicomico County Library	410-749-3612
Wicomico Mentoring Project	410-677-4501
YMCA	410-749-010

Nutrition

CAFP (Child & Adult Care Food Program)	410-767-0199
Expanded Food & Nutrition Education	410-749-6141x2
International Nutrition	800-899-3413
Joseph House	410-749-4239
Maryland Food Bank	410-742-0050
Salisbury Urban Ministries	410-749-1563
Salvation Army Social Services	410-749-3077
WIC Program (Women Infant & Children)	410-749-2488
**** For a list of Food Pantries, please contact our agency	



Education

Adult Learning Center	410-749-3217
Birth to Five/Child Find	410-677-5250
Deaf and Independent Living Center	410-742-5052
Delmarva Education Foundation	410-219-3336
Division of Rehabilitative Services (DORS)	410-546-1580/1-866-223-2661
Easter Seals	410-546-2894
Goodwill Career Development	410-219-9118
Head Start –Shore Up	410-749-1142 x331
IEP Info, MD State Dept of Edu	1-800-535-0182
Infant & Toddler Program	410-677-5250
One Stop Job Market	410-341-6515
Pinehurst Elementary	410-749-5176/410-677-5810
Wicomico Public Library	410-749-3612
Salvation Army	410-749-7771
Salvation Army After School Program	410-749-4757

Respite

Bay Shore Services	410-341-0307
Caring Communities	866-227-4644
Children’s Choice Respite	410-860-0483
Eastern Shore Respite Care Project	410-221-1900 /800-439-1222
Maple Shade Respite Care	410-742-7400
Dove Pointe Children’s Program	410-341-4472

Self-Advocacy

Arc of MD	410-571-9320/ 888-272-3449
Lower Shore Friends	410-334-2173
Parent and IEP advocacy- Children’s Choice	410-860-0484
People on the Go	410-571-9320
Self Advocacy Network	888-272-3449

NOTES



Equipment/Assistive Devices

American Home Patient	410-742-3711
Apple Drugs	410-749-8401/410-543-8401
Assistant Technology Group Rehab (ATG)	410-749-1065
Avenue Medical	1-800-541-8119
Free State Medical (Assistive Devices)	1-800-766-5448
Holly Community	443-260-0822/877-511-0744
Maryland at Co-Op	410-381-2667
Maryland Relay Service	1-800-201-7165 (TTY) 711
Maryland Technology Assistance Program	1-800-832-4827
Medic Alert	1-888-633-4298
Neighbor Care	410-546-0027
Omni Care	410-860-2620
PRMC Lifeline (No MA Accepted)	410-543-4740
Rothschild's Orthopedics	410-546-5502
**Assists with Artificial Leg and Leg Braces	
TTI Mobility Products (Accepts MA)	410-543-4323
Wicomico County Birth to Five	410677-5250

Mental Health

Atlantic Psychological Practice	410-543-8291
National Alliance for the Mentally Ill	410-208-3328
Catholic Charities	410-749-1121
Core Services	410-543-6980
Delmarva Counseling Center	410-896-3995
Delmarva Family Resources	410-334-6687
Eastern Shore & State Hospital	410-221-2300
Eastern Shore Psychological	410-334-6961
Go-Getters	410-546-0381
Life Crisis Center	410-749-4357
Lower Shore Clinic	410-341-3420
Maple Shade Youth & Family Services	410-742-7400
MD Coalition for Children's Mental Health	410-901-1007
Mental Health Hot Line (PRMC)	410-543-7160
Pine Bluff Counseling	410-677-0466
TLC (Three Lower Counties)	410-219-1100
Wicomico Health Dept. Behavioral Health	410-334-3497



NOTES



	<u>Medical/Nursing</u>
A.I. DuPont	302-651-4000
Coastal Hospice	410-742-8732
Community Dental	410-912-0288
Communicable Disease	410-543-6943
DNA Diagnostic Testing	1-800-362-2368
Down Syndrome Clinic (Kennedy Krieger)	1-888-554-2080
Easter Seals	410-546-2894
Health South Chesapeake Rehab	410-546-4600
Healthy Families	410-543-6942
Lead Poisoning	410-534-6447/1- 800-370-5323
Model Waiver	410-987-1048 /1- 800-296-2242
Thomas Patient Care	410-548-2959
TLC (Three Lower Counties)	410-219-1100
Kennedy Krieger (Intake & Referral)	1-888-554-2080
Peninsula Main St. Occupational Health & Urgent Care	410-548-2700
Peninsula Regional Medical	410-546-6400
Physician's Referral Service	1-800-955-7762
Shriner's Hospital Referral Line	1-800-237-5055
Well Mobile	410-341-0842

	<u>Family Support</u>
ADHD Support Group	ittakesavillagegroup@yahoo.com
Autism Society of America	1-800-328-8476
Big Brothers/Big Sisters of The Greater Chesapeake	410-543-2447
Brain Injury Association of Maryland Support Group	410- 448-2924/800-221-6443
C.H.A.D.D. **attention deficit support group	410-458-6500 / 800-223-4050
Cleft Advocate	1-888-486-1209
Compassionate Friends	410-957-2769
Family Support Network - Partners for Success Wicomico County Board of Education	410-677-5250
Family Tree Parenting Help Line	1-800-243-7337
Family Voices of Maryland **Josie Thomas	410-768-9100-1-800-394-5694
Lower Shore Childcare Resource Center	410-543-6650
Maryland Parents of Blind Children	301-387-4182
Muscular Dystrophy Support	410-494-7106
National Family Association for the Deaf-Blind	800-255-0411
National Federation of the Blind	410-659-9314
Parent Advocate Services	410-546-6106
The Parents Place of Maryland	410-928-2079 / 410-768-9100
Wicomico Mentoring Project	410-677-4586
Wicomico BOE Student and Family Services	410-677-4586

Financial Aid

Choptank Electric Trust	1-877-892-0001 ext 8660
DDA of Maryland	410-767-5600/1-877-463-3464
DD Eastern Shore Regional Office	410-572-6920
Department of Social Services	410-713-3900
Disabled Children's Relief Fund	www.dcrf.com
Holly Community	443-260-0822
Jill Fox Memorial Fund	410-727-4828
Joseph House	410-749-4239, 410-742-9590
Maryland Pharmacy Assistance	800-456-8900
MD TAP Loan Program	800-832-4827
**Technology Assistive Program	
My Brother's Keeper	410-644-3194
Ronald McDonald House	410-528-1010
Salisbury Neighborhood Housing	410-543-4626
Salisbury Urban Ministries	410-749-1563
Shore Up!	410-749-1142
**energy/weatherization/transportation asst.	
Social Security	410-749-2101/1-800-772-1213



NOTES

Housing

Christian Shelter	410-749-5673
Department of Social Services	410-713-3900
Diakonia	410-213-0923
Eastern Shore Center for Independent Living	410-221-7701/800-705-7944
Habitat for Humanity	410-749-4239
Joseph House	410-546-1551
Tri-County Alliance for the Homeless	443-523-1810
Wicomico Housing Authority	410-749-1383

** For more information, please contact our agency for a housing guide

Insurance

Maryland Primary Adult Care Program	1-800-226-2142
MD's Children Health Program	1-800-456-8900/410-543-6944
MD Medical Assistance Helpline	1-800-284-4510
Physician's Medical Services	410-277-9710
Rare & Expensive Case Mgmt	1-800-565-8190/410-767-1903



Legal Issues

ADA Information Center	1-800-949-4232
Benefits Info	1-888-838-1776/ 301-277-2839
Legal Aid Bureau	410-546-5511
Maryland Coalition for Inclusive Education	410-859-5400
Maryland Disability Law Center	1-800-233-7201/410-727-6352
Maryland Volunteer Lawyer's Service	1-800-510-0050
Public Defender Office	1-877-430-5187/410-713-3400